







**jt** | JORGENSENTURNER



St. Elmo Road, Askew  
Village, W12

£1,995 Per Month

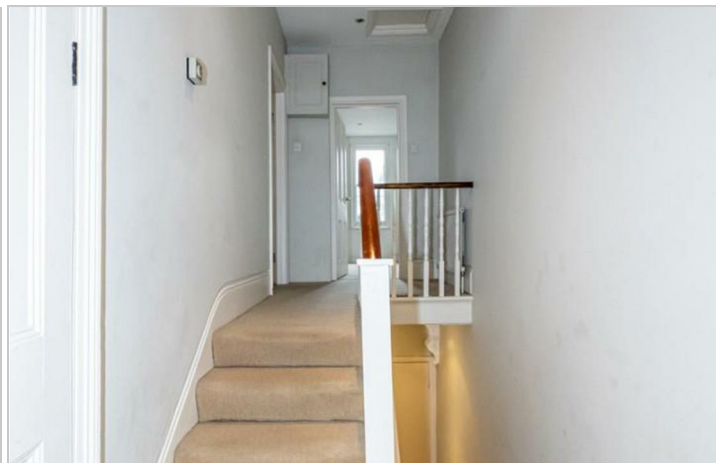


 1
  1
  1
  D



# St. Elmo Road, Askew Village, W12

£1,995 Per Month



## Summary Description

**\*\*STILL AVAILABLE\*\*** Beautifully presented split level large one double bedroom flat. Stunning throughout this wonderful property have a south facing reception room and a great size kitchen/diner with a dish washer. The bedroom has large built in wardrobes and high ceilings. The bathroom is clean and modern.

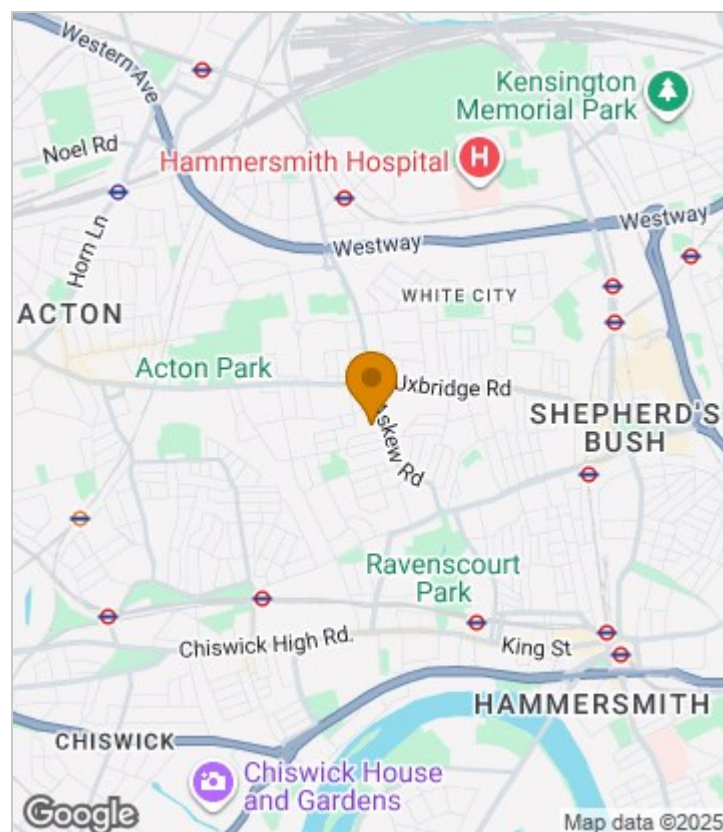
Moments away from Askew Road and multiple shops (Co-op/ Tesco), restaurants, cafes and many bus routes this sought after area has to offer.

AVAILABLE NOW AND OFFERED UNFURNISHED

Council tax band: C

EPC Rating: D

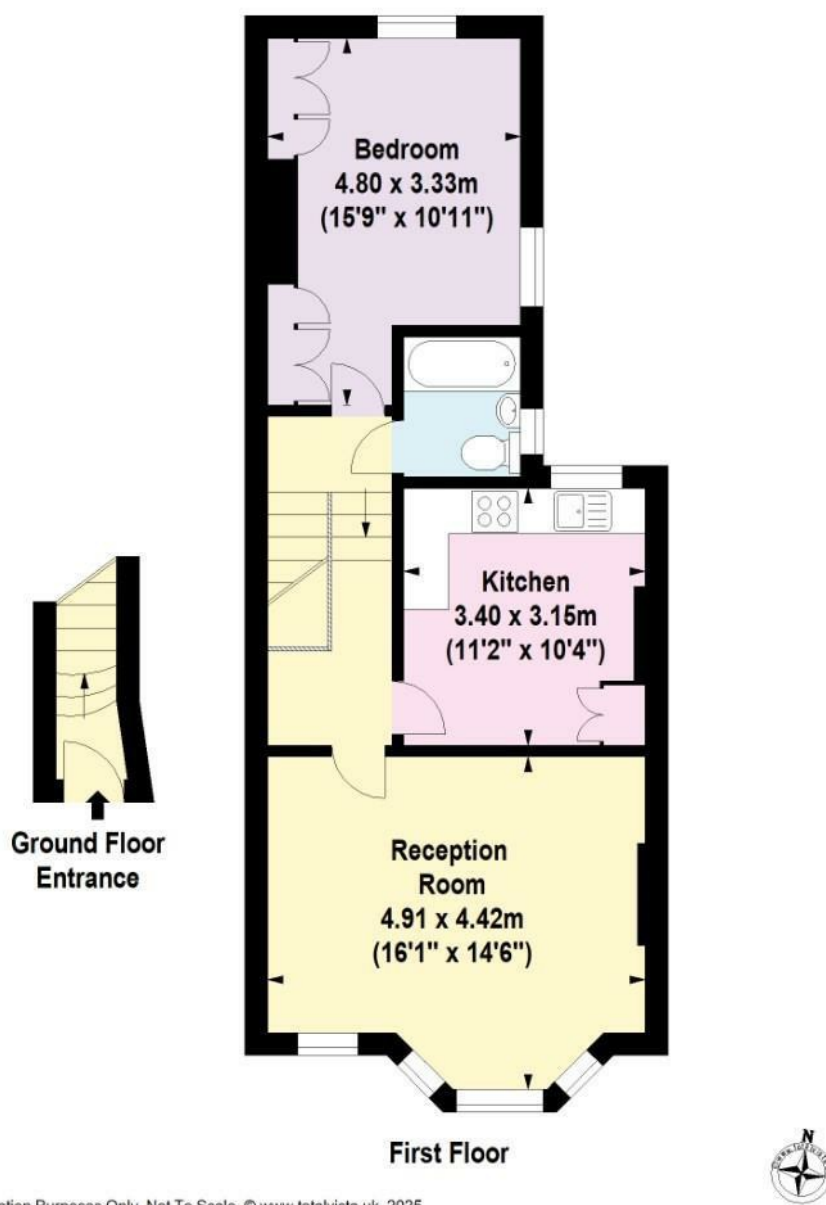
## Area Map



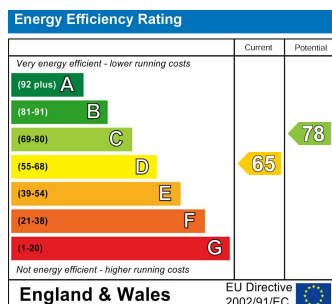




## Floor Plan



## Energy Efficiency Graph



## Viewing

Please contact our Lettings SB Office on 0208 740 8740 if you wish to arrange a viewing appointment for this property or require further information.

- Large one bedroom flat
- Bright and airy
- Built in wardrobes
- Large reception room
- Split level
- Unfurnished
- Newly renovated kitchen
- 642 sq ft / 59 sq m

For further information contact:

Lettings SB, 234 Uxbridge Road, Shepherds Bush, London, W12 7JD

Tel: 0208 740 8740 Email: [enquiries@jorgensenturner.com](mailto:enquiries@jorgensenturner.com)

<https://www.jorgensenturner.com/>

### Disclaimer

These particulars, whilst believed to be accurate are set out as a general outline only for guidance and do not constitute any part of an offer or contract. Intending purchasers should not rely on them as statements of representation of fact, but must satisfy themselves by inspection or otherwise as to their accuracy. No person in this firm's employment has the authority to make or give any representation or warranty in respect of the property.